

## IMPORTANT SAFEGUARDS

**When using Electric Tools, basic safety precautions should always be followed to reduce risk of fire, electric shock, and personal injury, or death including the following:**

- 1) Read all instructions.
- 2) Use Hot Wire tools only for their intended use. Use only with polystyrene foams. Use on other materials could cause toxic fumes fire or electric shock.
- 3) Use only in well ventilated areas. Open nearby windows or doors, or use an exhaust fan.
- 4) Wear eye protection at all times the Hot Wire tools are plugged in.
- 5) Do not allow cord to touch hot surfaces. Never carry tool by cord or yank it to disconnect from outlet. Do not allow cords to touch the cutting wires this may short them and produce fire or electric shock.
- 6) Not made for use by or near children. Unplug the Power Supply before leaving it unattended.
- 7) When not in use, tools should be stored in a dry place, out of reach of children.
- 8) Do not expose electrical tools to rain. Do not use electrical tools in damp or wet locations. Prevent body contact with grounded surfaces. For example: pipes, or radiators.
- 9) Do not operate Hot Wire tools in the presence of explosive and/or flammable fumes or materials.
- 10) Burns can occur from touching the hot cutting wire when it is at normal operating temperature. Never set tools down while they are turned on, as they could cause a fire and/or short out.
- 11) Disconnect power cord when changing Hot Wires. Follow the instructions for proper replacement of cutting wires.
- 12) The Hot Wires are the only user serviceable parts. Only use special factory provided Hot Wires. Replacing with the wrong kind of wire will ruin your unit, and could cause a fire. For any other repair or adjustment return your unit to the factory. Inspect your unit periodically for worn or broken parts.

### **HOT WIRE FOAM FACTORY INC. LIMITED WARRANTY**

This product is warranted for non commercial use within the fifty states of the USA and the District of Columbia as follows:

For 90 days from the original date of purchase, HWFF INC. will, at its option repair or replace a defective unit free of charge, if the unit is defective due to an original manufacturer's defect.

This warranty covers normal use and does not cover damage which occurs in shipment or failure which results from alteration, accident, misuse, abuse or neglect. Except as herein expressly set forth, HWFF INC. shall not, under any circumstances be responsible for any direct, indirect, incidental or consequential damage resulting from the use of the equipment. The consumers' sole remedy shall be such repair or replacement as is expressly provided above.



## 2' Bow Cutter Instruction Booklet

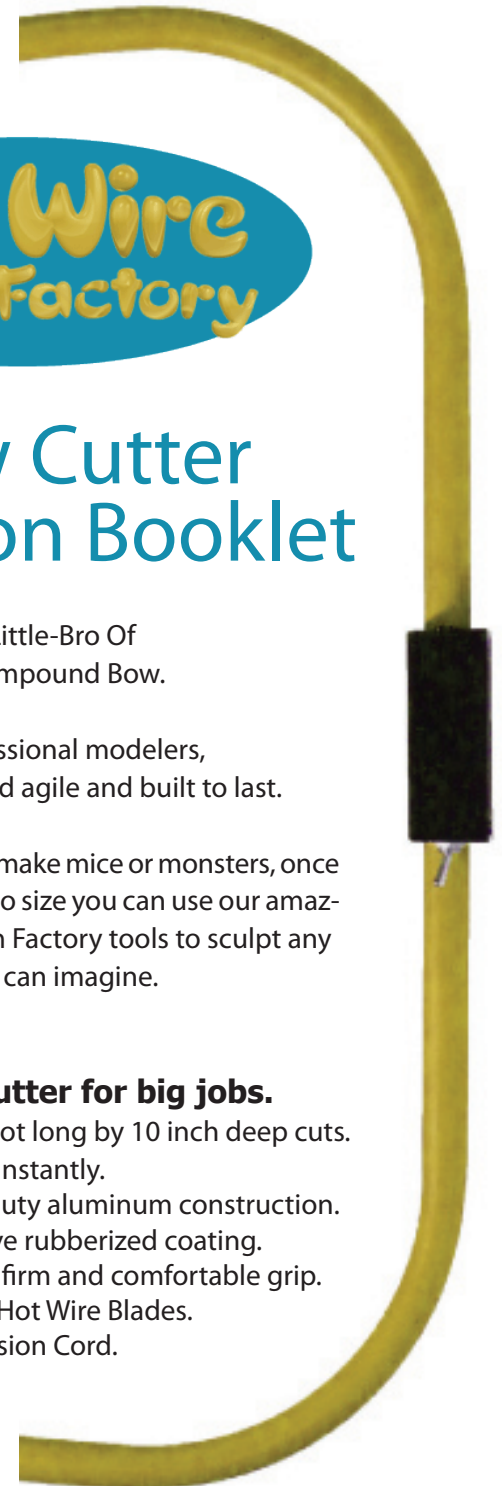
It's The Little-Bro Of  
The Big Compound Bow.

Built for professional modelers,  
our 2' Bow is fast and agile and built to last.

Whether you're aiming to make mice or monsters, once you get your foam down to size you can use our amazing line of Hot Wire Foam Factory tools to sculpt any shape you can imagine.

### **The ultimate cutter for big jobs.**

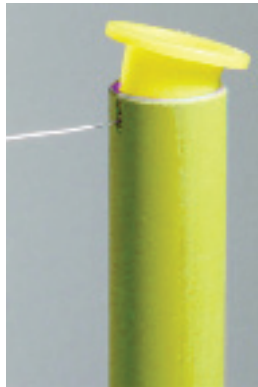
- Super clean and fast 2 foot long by 10 inch deep cuts.
- Change direction of cut instantly.
- Lightweight but heavy duty aluminum construction.
- Ultra tough and insulative rubberized coating.
- Thick round tubing for a firm and comfortable grip.
- Includes 4 ultra-longlife Hot Wire Blades.
- Includes a 6ft Tool Extension Cord.



## Assembly

### Hot Wire

It's as simple as stringing a bow. Insert the Hot Wire into the slit on either of the two arms. Pull the Hot Wire so the flattened end is snug against the inside wall of the tube. Push in the yellow Holding Plug to bend down the flattened section of the Hot Wire. Place the loaded end of the Bow Cutter on the floor or against a wall and gently push it in just enough to load the Hot Wire into the slit in the other arm.



— Holding Plug

## Operation

### Power Supply

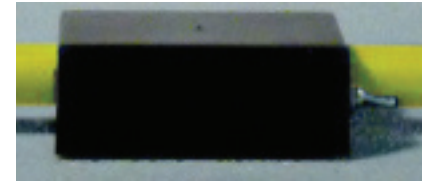
Plug the Power Supply into a wall outlet or extension cord.



Tons of foam sculpting ideas at  
[www.hwff.com](http://www.hwff.com)

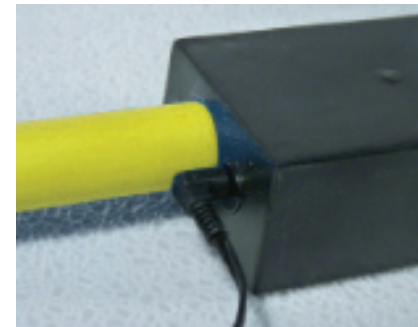
### Control Box

The Control Box, with the on-off switch and power receptacle, is conveniently mounted on the top of the 2 Foot Bow. The on-off switch is on one side and the power input plug is on the other. Be sure that the red on-off switch is in the off position.



### Power Plug & Cutting

Plug the supplied tool extension cord into the Control Box. Plug the other end into the Power Supply. Hold the Bow Cutter's Hot Wire against the foam where you want to cut. Turn on the red switch and make the desired cut. Remember to let the heat do the cutting. If you use force to cut you will gain nothing except breaking a blade. As soon as you are done with the cut turn off the red switch.



### Spare Wires

Four spare Hot Wires are included. Only use special factory provided Hot Wires. Replacing with the wrong kind of wire will ruin your unit, and could cause a fire.

