

IMPORTANT SAFEGUARDS

When using Electric Tools, basic safety precautions should always be followed to reduce the risk of fire, electric shock, and personal injury, or death including the following:

1. Read all instructions.
2. Use Hot Wire tools only for their intended use. Use only with polystyrene and polyethylene foams. Ask the manufacturer of the foam you plan to cut to make sure there are no health or safety hazards when cutting their foam with Hot Wire tools.
3. Use only in well ventilated areas. Open nearby windows or doors, or use an exhaust fan. If you see or smell smoke coming from the foam, turn the heat down to the proper melting temperature. Wear approved respirator when necessary.
4. Wear eye protection at all times the Hot Wire tools are plugged in.
5. Do not allow the cords to touch hot surfaces. Never carry tools by cords or yank to disconnect from outlets. Do not allow cords to touch the cutting wires or knife- this may short them and produce fire or electric shock.
6. When not in use, tools should be stored in a dry place, out of reach of children.
7. Don't expose electrical tools to rain. Don't use electrical tools in damp or wet locations. Prevent body contact with grounded surfaces. For example: pipes, or radiators. Unplug Power Supply before leaving it unattended.
8. Do not operate Hot Wire tools in the presence of explosive and/or flammable fumes or materials.
9. Burns can occur from touching the hot cutting wire when it is at normal operating temperature. To reduce risk of burns never touch any metal parts of a hot tool. Never set tools down while they are turned on, as they can cause a fire and short out.
10. Disconnect power cords when changing cutting wires. Follow the instructions for proper replacement of cutting wires.
11. Cutting wires are the only user serviceable parts. Only use special factory provided cutting wires. Replacing with the wrong kind of wire will ruin your unit, and could cause a fire. For any other repair or adjustment return your unit to the factory. Inspect your unit periodically for worn or broken parts.
12. Keep out of reach of children.
13. Close adult supervision is necessary for any tool being used near children. The Hot Wire tool is not be used by persons with reduced physical sensory or mental capabilities, or lack of experience and knowledge, unless they have been given supervision or instruction. Young adults are never to use hot wire tools without adult supervision.

LIMITED WARRANTY

This product is warranted for non commercial use within the fifty states of the USA and the District of Columbia as follows: For 90 days from the original date of purchase, HWFF INC. will, at its option repair or replace a defective unit free of charge, if the unit is defective due to an original manufacturer's defect.

This warranty covers normal use and does not cover damage which occurs in shipment or failure which results from alteration, accident, misuse, abuse or neglect. Except as herein expressly set forth, HWFF INC. shall not, under any circumstances be responsible for any direct, indirect, incidental or consequential damage resulting from the use of the equipment. The consumers' sole remedy shall be such repair or replacement as is expressly provided above.

SHOULD YOUR UNIT REQUIRE SERVICE, please call us at 805-735-9255 for a return authorization number and further instructions.

OPERATING INSTRUCTIONS

Hot Wire Foam Factory

4-FOOT COMPOUND BOW CUTTER



It's two, three, four bows in one!

*Built for professionals, our Compound Bow
is fast, agile, and built to last.*

It's the ultimate hot wire hand-cutter for big jobs.

- Super clean and fast 2 or 4 foot long by 6 or 18 inch deep cuts.
- Lightweight yet heavy duty aluminum construction.
- Ultra-tough and insulative rubber coating.
- Thick round tubing for a firm and comfortable grip.
- Includes 8 long-life Hot Wires.
- Includes an extension cord to the Bow.
- Includes Multi-Heat Bow Power Station.
- Change direction of cut instantly.
- Convenient switch is right on the tool.
- Quickly collapses for shipping and storage.
- Made in USA

www.HotWireFoamFactory.com

ASSEMBLY

Vertical Extension Arm

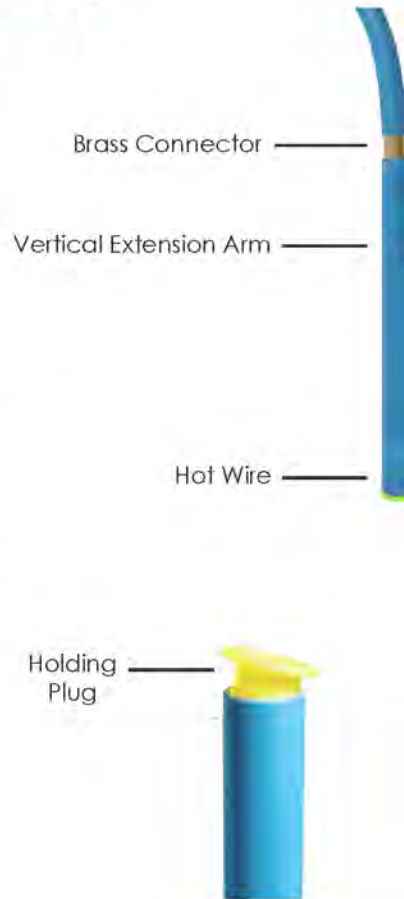
Simply insert both of the Vertical Extension Arms' Brass Connectors into the Bow. Be sure that the slit in the end of the straight arm faces the inside of the bow.

It's okay if it is a little bit loose since it will snug itself in when the Hot Wire is spring loaded between the two Extension Arms.

2', 3', and 4' Bow Extension Arms are also available as add-ons to this kit.

Hot Wire

It's as simple as stringing a bow. Insert the Hot Wire into the slit on either of the Vertical Extension Arms. Pull the Hot Wire so the flattened end is snug against the inside wall of the Extension Arm tube. Push in the yellow Holding Plug to bend down the flattened end of the Hot Wire. Place the loaded end of the Bow Cutter on the floor or against a wall and gently push it in just enough to load the Hot Wire into the slit in the other Vertical Extension Arm. Turn the Arms after the Hot Wire heats up, to increase Hot Wire tension. Always loosen the tension on the Hot Wire before turning off the power, this will help prevent the Hot Wire from breaking.



4-Foot Horizontal Extension

Unscrew the Horizontal Extension Arm on the 2-Foot Bow and pull it out of its socket. Push the silver end of the Horizontal Extension Arm onto the brass socket. Make sure the clamp is centered before tightening. Don't overtighten. Push the Bow's curved arm onto the other end of the Extension Arm and center and gently tighten the second clamp. Clamps use a 5/32 hex key.



OPERATION

Power Supply

CAUTION: Never operate the 2-Foot Bow at higher than 16 Volts. This can cause a fire hazard and will void your warranty.

Plug the Power Supply into a wall outlet or extension cord. Slide the heat switch to the desired voltage. Always turn off power and unplug from wall when not cutting. Always use the provided Extension Cord to the Bow Cutter.

An Ultra High-Heat Bow Power supply is also available as an add-on to this kit.



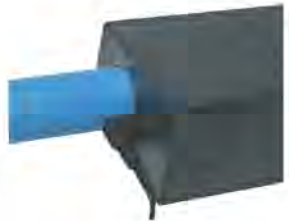
Control Box

The Control Box, with the on-off switch and power receptacle, is conveniently mounted on the top of the Bow. The on-off switch is on one side and the power input plug is on the other. Create tension on the wire by rotating the Vertical extension arms. Be sure that the on-off switch is in the off position when you are not cutting.



Extension Cord & Cutting

Plug the Extension Cord from the Power Supply into the Control Box. Hold the Bow Cutter's Hot Wire against the foam where you want to cut. Turn the switch on and make the desired cut. Remember to let the heat do the cutting. If you use force to cut you will gain nothing except breaking a Hot Wire. As soon as you are done with the cut release the tension on the wire by rotating the Vertical Extension Arms, then turn the switch off.



Spare Hot Wires

Four spare 2-foot and four 4-foot Hot Wires are included. Only use special factory provided Hot Wires. Replacing with the wrong kind of wire will ruin your unit, and could cause a fire.



WEBSITE TIPS AND GALLERY

The Hot Wire Foam Factory website is filled with tips and projects contributed by our foam artists and hobbyists from all over the world. Visit our extensive Artist Gallery and FAQs.

www.HotWireFoamFactory.com

216 East Laurel Ave, Lompoc, CA 93436

